

DIA PATH

CANOVA Embedding module with dispensing unit and hot plate**Canova embedding module****CODE SDSCVXX00****Manufacturer: Diapath S.p.A.****GENERAL FEATURES**

The new embedding module Canova is designed to facilitate the lab technician during the histological specimens embedding step. Studied to meet operator needs concerning comfort and use during the long and repetitive working step as specimen embedding, Canova achieves its purpose due to the attention to detail as: LED light, with fully adjustable intensity to not strain technician eyes; soft and resistant covering material that protects against contact with the heated areas; fully intuitive and easy-to-use graphical menu with icons; removable cassette and mold warmers for an easy and fast instrument cleaning.

The attention to the manufacturing materials ensures reliability and durability, offering an innovative line and a winning design. The complete software temperature management (heated points and cold spot) ensures a complete flexibility and allows the technician to use any kind of paraffin present in the laboratory.

1. Functions:

- Innovative and ergonomic design with soft coverings and insulated and rounded contact area
- Suction of harmful vapors, thanks to an integrated system equipped with activated charcoal filters
- Paraffin fast melting (estimated in about 3 hours)
- Paraffin waste drawer with comfortable disposable reservoir, made of plasticizing paper
- Large working surface to embed comfortably an high quantity of specimens
- Block trimmer for cassette cleaning, that allows to remove paraffin excess from the cassette
- Efficient paraffin draining system to prevent build up on the working surface
- Heated and removable forceps holder with 5 slots for standard forceps and 2 for heated forceps
- Cold spot, cooled by a Peltier, able even to accommodate mega-cassettes
- LED lighting system with adjustable intensity
- Adjustment and digital and independent display of all temperatures by comfortable color LCD screen
- Heated forceps and tamper temperatures managed by the software
- Dispensing of liquid paraffin from the dispenser through manual and/or foot pedal switch
- Modulation of paraffin flow rate through precise adjusting lever
- Planning of automatic switching days and hours for the working week
- Removable cassette trays and molds holder

2. Capacity and productivity:

- Paraffin reservoir capacity: 4 lt
- Paraffin flow from the dispenser: Adjustable
- Mold warmer capacity: Over 300 standard molds, well organized
- Cassette warmer capacity: 150 standard cassettes, well organized

3. Installation:

- Installation on a plane, stable, vibration-free surface
- Minimum dimension: 750Wx700D mm
- Weight: 40Kg
- Electrical requirements: 230V, 10A, 60Hz
110V, 10A, 50Hz

4. Maintenance:

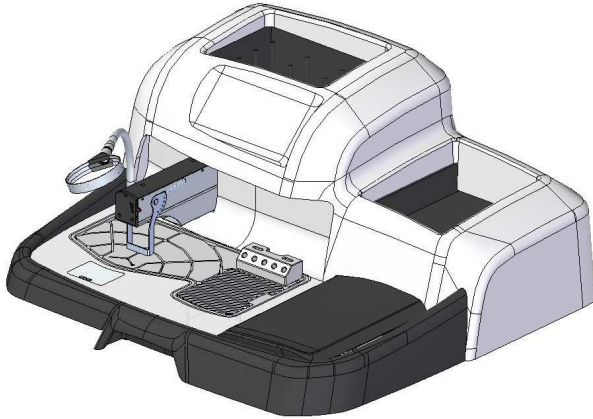
The embedding module software and control board integrate the FMC (Fast Maintenance Check) option that controls, manages and requires periodic maintenances, useful to assure a high and CE – IVD certified quality and safety standard.

Version "K" (code SDSCV8000):

The software alerts and requires the installation of the maintenance kit (see section "Canova Maintenance Kit"). The internal control board monitors and records the correct kit installation and original spare parts replacement. The non-replacement of the kit and its non-maintenance don't allow the module use because of it would be in not certified conditions for operator safety and instrument efficiency.

DIA PATH

USE FEATURES



Ergonomics and innovative design

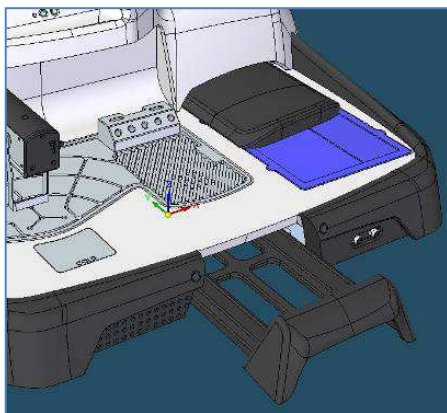
The high quality materials and the attention to details make Canova a reliable and easy-to-use instrument. Canova is equipped with:

- LED spotlights, linear adjustment of light source to no stress operator's sight
- Large soft covering to avoid muscle-skeletal system damages and without stress for articulations during embedding process
- Block trimmer for cassette cleaning, that allows to remove paraffin excess from the cassette without using blades or scalpels

Prompt and intuitive use

The graphical menu with icons allows to quickly access all instrument settings even due to the comfortable keyboard and the 4.3" LCD screen. The operator can manage and completely modify the heated points (paraffin reservoir, molds and cassettes warmers, dispensing nozzle, heated forceps and tamper) and cold spot temperatures.

A series of alarms inform if the instrument detects some anomalies or if expiration dates of accessories and filter are close.



Easy maintenance

The special shape of the hot plate helps cleaning the instrument from liquid paraffin residuals, pouring its excess in the disposable reservoir located into the instrument base (not heated, for an easy removal).

The cleaning of molds and cassettes warmers is immediate: both devices are removable and equipped with a comfortable handle for an easier handling.

CANOVA embedding module**CODE SDSCVXX00**

1. 4 Lt paraffin reservoir (T adjustable +50°C/+70°C)
2. Block trimmer for cassette cleaning with heated wells for forceps location
3. Molds warmer (T adjustable +50°C/+70°C)
4. Cassettes warmer (T adjustable +50°C/+70°C)
5. Heater forceps and tamper connection
6. Paraffin collecting drawer
7. Cold spot (T adjustable -5°C/+5°C)
8. Paraffin dispenser paddle
9. Paraffin dispenser (T adjustable +50°C/+70°C)
10. Hot plate (T adjustable +50°C/+70°C)
11. 4.3" LCD screen with keyboard

AVAILABLE MODELS

Canova embedding module 230V, Version K
Canova embedding module 110V, Version K

CODE SDSCV8000
CODE SDSCV8100

Canova embedding module 230V
Canova embedding module 110V

CODE SDSCV9000
CODE SDSCV9100

AVAILABLE ACCESSORIES

Canova Safe Forceps 1 mm
Canova Safe Forceps 2 mm

CODE SDSCV9051
CODE SDSCV9052



1 or 2 mm heated forceps. Available for Canova embedding module.

Canova heated tamper

CODE SDSCV9021



Heated tamper for the specimen positioning at the bottom of the mold. Available for Canova embedding module.

Disposable reservoirs for paraffin waste drawer (60 pcs)

CODE SDSCV9028



Comfortable disposable reservoir, made of plasticizing paper, to be inserted in the paraffin waste drawer for an easier instrument cleaning

Foot pedal switch (for paraffin flow)

CODE SDCOP9014



Foot pedal switch to activate the paraffin dispenser. Fully compatible with embedding module Canova.

Canova Maintenance Kit

CODE SDSCV9029

The Canova Maintenance Kit is composed by:

- Canova activated charcoal filter
- Dispensing nozzle
- Paraffin dispenser paddle
- ACC (Activation Code Card) 6 months
- Disposable reservoirs for paraffin waste drawer (2 x 60 pcs)

Canova magnifying glass**CODE SDSCV9027****Halogen table lamp, adjustable****CODE SDXLA0000****LED table lamp, adjustable****CODE SDXLL0005****Lab ergonomic chair****CODE SDASE9000****TECHNICAL FEATURES:**

Reservoir capacity (liquid paraffin):	4 lt
Reservoir capacity (paraffin in grain):	about 2 Kg
Paraffin melting:	In about 3 hours
Heated points temperature adjustment range:	+50°C to +70°C
Cold spot temperature adjustment range:	-5°C to +5°C
Hot plate dimensions:	380Wx205D mm
Cold spot dimensions:	70Wx60D mm
Molds warmer capacity:	Over 300 standard molds, well organized 159Wx224Dx55H mm
Cassettes warmer capacity:	150 standard cassettes, well organized 161Wx226Dx50H mm
Lighting:	LED, adjustable (linear adjustment)
Tension:	230 V~ ±10% 110 V~ ±10%
Power:	2000W (230V) 1000W (110V)
Working temperature:	From +5°C to +40°C
Humidity:	From 10% to 80% without condensing
Certifications:	CE - IVD cTUVus

Dimensions and weight:

Dimensions: 730Wx675Dx350H mm

Weight: 40Kg

Equipped accessories:

Disposable reservoirs for paraffin waste drawer (2 x 60 pcs)

Data concerning adjustable temperature range of heated points and cold spot refer to standard working temperatures and not to minimum/maximum reachable temperatures.